

LAKE TOYA BOAT CRUISE

Lake Toya (Toya-ko) forms a part of the Shikotsu-Toya National Park. It is a national park in the central part of the island of Hokkaido, Japan. There are many lakes and active volcanoes in the park. This is a caldera lake, the remains of a very large volcanic eruption that has hollowed out the ground, where the water is highly mineral rich. Sightseeing boats departing from Toyako Onsen Spa offer cruises around the lake, as well as the island in the middle of the lake, which has some tourist attractions. A near-circular lake 10 kilometers in diameter, Lake Toya is famed for the clarity of its water, and it never freezes in winter thanks to the geothermal activity of the region. Lake Toya was chosen as the location of the G8 Summit, which Japan hosted in the summer of 2008.

Bus transportation is available between Otaki Seminar House and Toyako Onsen Spa. Meet at the seminar house entrance at 1 pm (subject to change). The Toyako Onsen Spa Pier is about 1-hour drive away.

The bus will stop at the Roadside Station "Michi-no-eki Aputa" for bathroom break and shopping and will return to the seminar house at 5:40 p.m.

- a) **Toyako Visitor Center** <http://www.toyako-vc.jp/en/>
- b) **2000 Volcanic Ruins Park and Mt. Konpira Trail** http://www.toya-usu-geopark.org/wp-content/uploads/2011/07/footpath_e_a.pdf
- c) **Nakajima Islands** http://www.toyako-vc.jp/en/midokoro/nakajima_area.html
- d) **Michi-no-eki Aputa** <http://www.hokkaido-michinoeki.jp/en/michi-no-eki/308/>

FEES & SAMPLE SCHEDULE

- FEES (pay on the site) ¥1,420/person (group discount ¥1,280/person)
- SAMPLE SCHEDULE

(A) REGULAR CRUISE: 50 minutes

Otaki (1pm)--Toyako Onsen Spa Pier (2pm)--Cruise Departure (2:30pm)--Cruise Arrival (3:20pm)--(walk to Toyako Visitor Center)--Pier (4 pm)

Otaki (1pm)--Toyako Onsen Spa Pier (2pm)--Cruise Departure (2:30pm)--Cruise Arrival (3:20pm)--(Volcanic Ruins Park & Mt. Konpira Trail)--Pier (4 pm)

(B) REGULAR CRUISE: 80 minutes

Otaki (1pm)--Toyako Onsen Spa Pier (2pm)--Cruise Departure(2:30pm)--Get off the boat for a walk in Nakajima Islands(2:55pm)--Get on the boat again (3:25pm)-
-Cruise Arrival(3:50pm)--Pier (4 pm)

*The above figures are approximate, provided only as a guide.

Shikotsu-Toya National Park – Toyako Area

Shikotsu-Toya National Park is a national park designated in 1949 and located amidst the natural splendor centering on Lake Toya, Mt. Yotei, Noboribetsu, Lake Shikotsu and Jozankei. The Toyako Area is characterized by a rough yet familiar, varied nature, which unfolds in the surroundings of Lake Toya, which is well known as Japan's northernmost ice-free lake along with Lake Shikotsu, and Mt. Usu, which still continues rigorous volcanic activities.

Toyako Visitor Center

The Ministry of the Environment has established visitor centers in the 28 national parks across the nation with the aim of providing information on the nature and use of national parks. The Toyako Visitor Center is an exhibition and information supply facility where visitors can get acquainted with the natural environment of Lake Toya through an exhibition and explanations concerning the surrounding natural environment and flora and fauna therein.

[Lecture Room] 1F

The nature of the Toyako Area throughout the year is introduced using a 150-inch high-definition television.



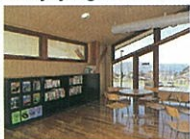
[View Corner] 2F

You can see the Konpira Crater-Remnants of the Disaster which were created by the 2000 eruption.



[Books Corner] 2F

You can check nature information on surrounding areas while enjoying the view of Lake Toya.

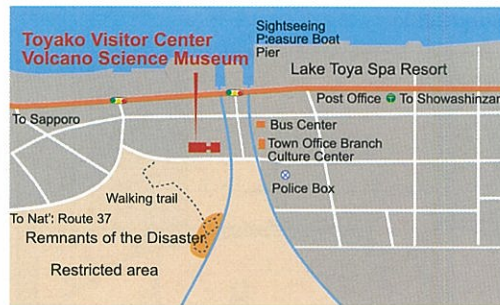
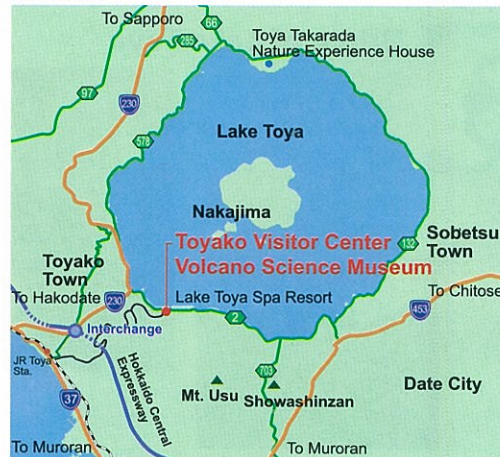


[Information Corner] 2F

Using a PC, you can closely study nature information on the Toyako Area with a 3D screen and audio.



Area Map



Access

JR / Bus

Sapporo Shinchitose Sta. → approx. 5 km; approx. 18 min. by bus → 2 min. walk → Lake Toya Spa Resort Bus Terminal

Sapporo Sta. → JR Muroran Line (approx. 1 hr. 40 min. by limited express train) → Toya Sta. → approx. 5 km; approx. 18 min. by bus → 2 min. walk → Lake Toya Spa Resort Bus Terminal

Sapporo Sta. → Express bus: approx. 2 hr. 40 min. to Lake Toya Spa Resort Bus Terminal → 2 min. walk → Lake Toya Spa Resort Bus Terminal

Car

Sapporo → approx. 103 km; approx. 2 hr. via Jozankei, Nakayama Pass and Rusutsu Kogen → Lake Toya Spa Resort Bus Terminal

New Chitose Airport → Via Lake Shikotsu and Bifue Pass (approx. 90 km; approx. 1 hr. 40 min.) → Lake Toya Spa Resort Bus Terminal

New Chitose Airport → Express bus: Chitose I.C. – Abuta-Toyako I.C. (approx. 110 km; approx. 1 hr. 20 min.) → Lake Toya Spa Resort Bus Terminal

Toyako Visitor Center

Volcano Science Museum

Toyako Visitor Center

Facility Guide

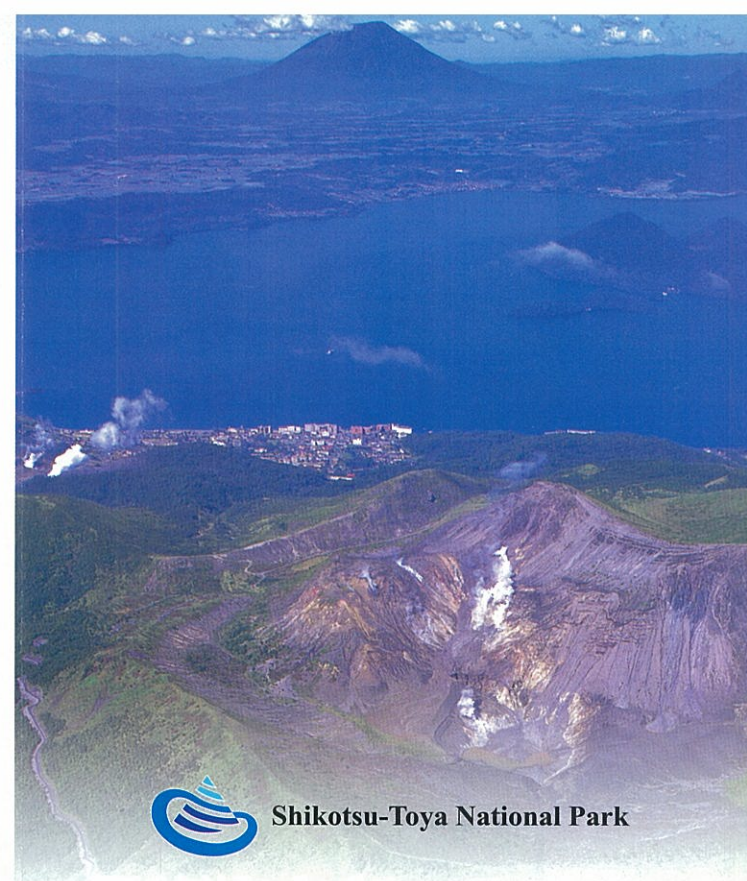
Hours: 9:00 a.m. – 5:00 p.m. Closed: Dec. 31 – Jan. 1
142-5, Toyako Onsen, Toyako-cho, Abuta-gun, Hokkaido
Tel: 0142-75-2555

URL: <http://www.toyako-vc.jp>

Free admission (Volcano Science Museum requires admission fees.)

Free parking (capacity: 29 passenger vehicles and 12 buses)

* A tour guide will be available upon request.



Shikotsu-Toya National Park

Toyako Visitor Center



Hokkaido Regional Environment Office

Ministry of the Environment



Field Information

Guidance on how to enjoy the fields by Lake Toya and an introduction of national parks across the nation are given.



Reception



Field manner panels



Origin of Lake Toya

The characteristics of Lake Toya, a caldera lake, and Mt. Usu, a still active volcano, are introduced through the history and mechanism of eruptions.



What-Is-This Table



Graphic Tower

Introduction of Lake Toya

Aerial photos of Lake Toya spread across the floor. Above them stand posts describing Lake Toya's observation points and thus introducing the area.



Posts for observation points

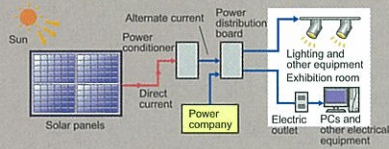


1/1,200 aerial photograph

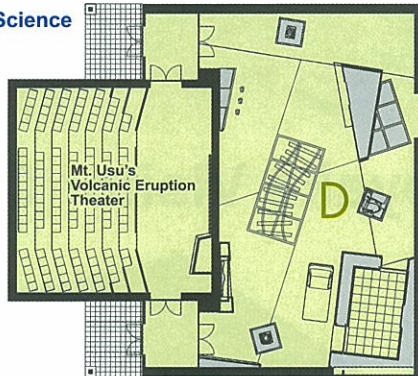
Utilization of natural energy sources

The facility has adopted a photovoltaic power generation system and a ground source heat recovery system in consideration of the needs to save energy and protect the environment.

Photovoltaic power generation system



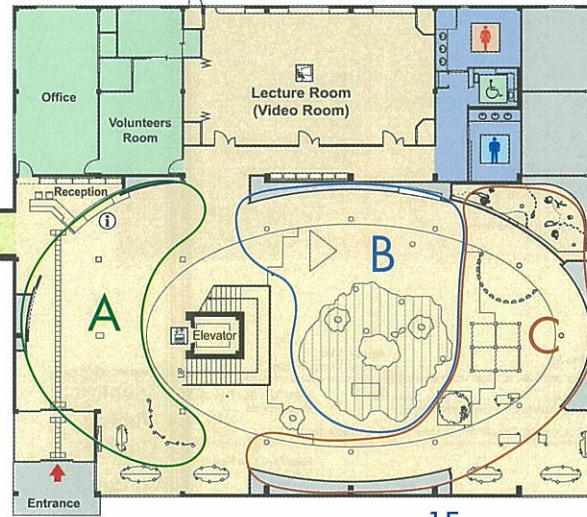
Volcano Science Museum



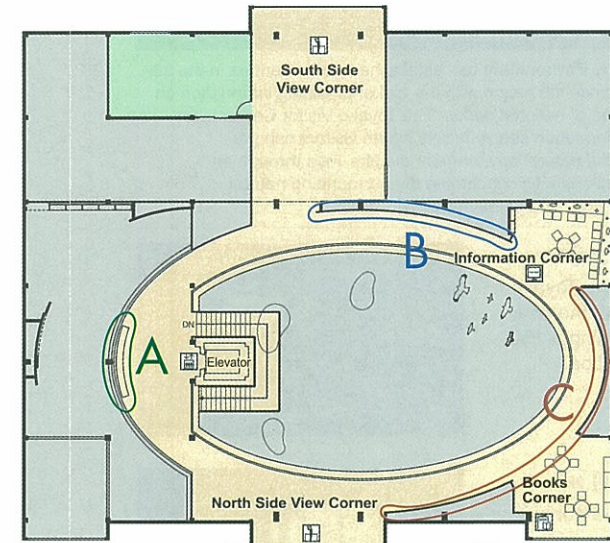
Total floor area: 492.08 m²



Toyako Visitor Center



1F total floor area: 1,005.35 m²

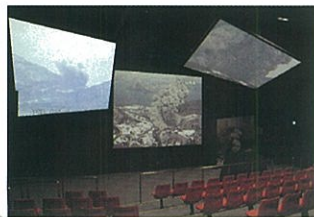


2F total floor area: 465.98 m²



Volcano Science Museum

The Volcano Science Museum, connected with the Toyako Visitor Center via the skywalk, introduces the volcanic activities of Mt. Usu, which erupts every 20 to 50 years.



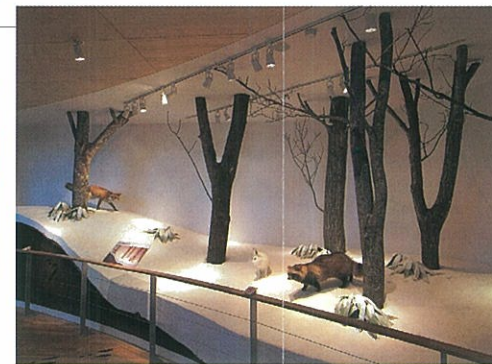
3D Multi-Vision Theater



Real specimen of tree stems

Nature in and around Lake Toya

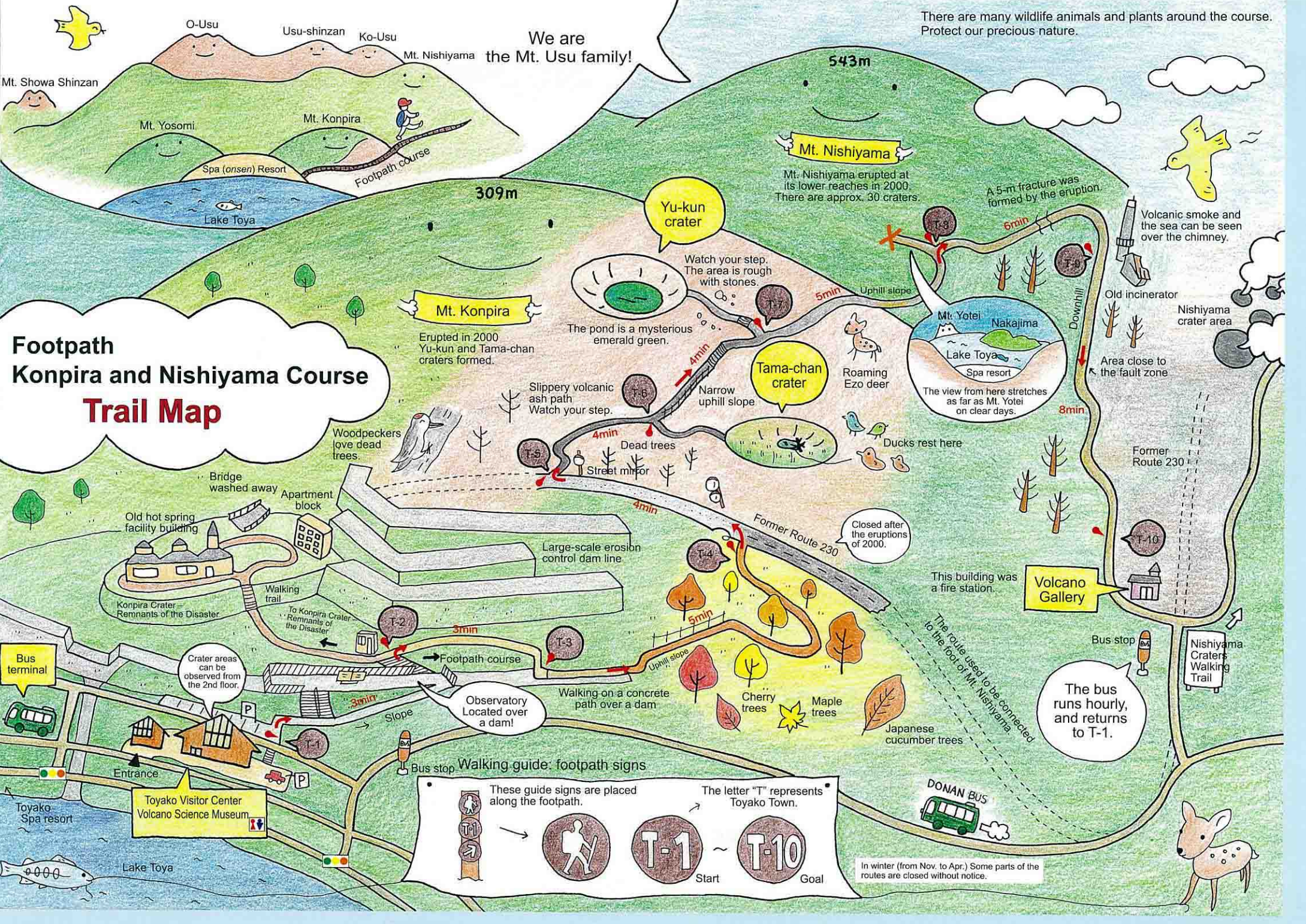
Characteristics and relations of flora and fauna around Lake Toya are introduced, using beautiful photos and real specimens.



Diorama (living beings in winter)



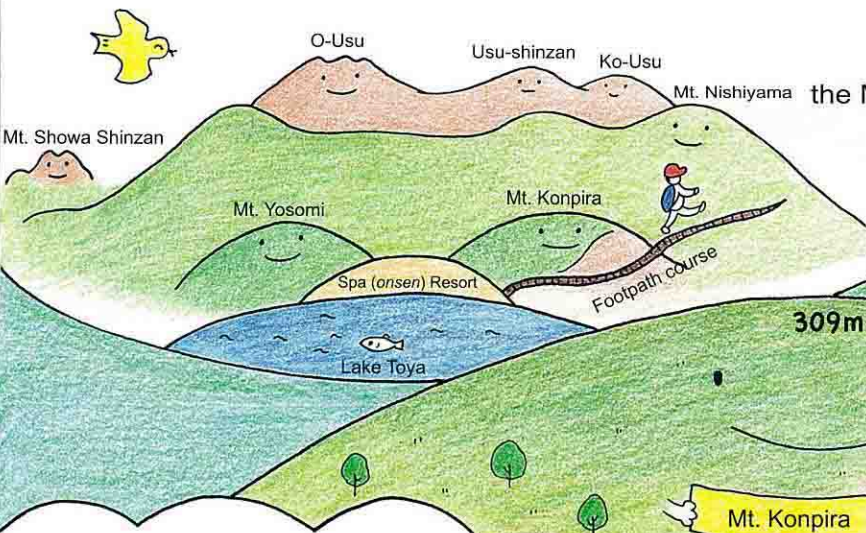
Diorama (underground activities)



There are many wildlife animals and plants around the course. Protect our precious nature.

We are the Mt. Usu family!

Footpath Konpira and Nishiyama Course Trail Map



Mt. Konpira
Erupted in 2000 Yu-kun and Tama-chan craters formed.

Mt. Nishiyama
543m
Mt. Nishiyama erupted at its lower reaches in 2000. There are approx. 30 craters.

Yu-kun crater
Watch your step. The area is rough with stones.

Tama-chan crater
The pond is a mysterious emerald green.

A 5-m fracture was formed by the eruption.

Mt. Yotei Nakajima
Lake Toya Spa resort
The view from here stretches as far as Mt. Yotei on clear days.

Volcanic smoke and the sea can be seen over the chimney.

Woodpeckers love dead trees.

Slippery volcanic ash path Watch your step.

Roaming Ezo deer

Ducks rest here

Old incinerator

Area close to the fault zone

Former Route 230

Closed after the eruptions of 2000.

This building was a fire station.

Volcano Gallery

Bus stop

Nishiyama Craters Walking Trail

The bus runs hourly, and returns to T-1.

Bridge washed away

Apartment block

Old hot spring facility building

Konpira Crater Remnants of the Disaster

Walking trail

To Konpira Crater Remnants of the Disaster

Large-scale erosion control dam line

Street mirror

Dead trees

Former Route 230

Walking on a concrete path over a dam

Cherry trees

Maple trees

Japanese cucumber trees

Observatory Located over a dam!

Walking guide, footpath signs

Toyako Spa resort

Toyako Visitor Center Volcano Science Museum

Entrance

Lake Toya

These guide signs are placed along the footpath.

The letter "T" represents Toyoko Town.

T-1 Start

T-10 Goal

In winter (from Nov. to Apr.) Some parts of the routes are closed without notice.

